

Object Oriented Network Storage System  
90

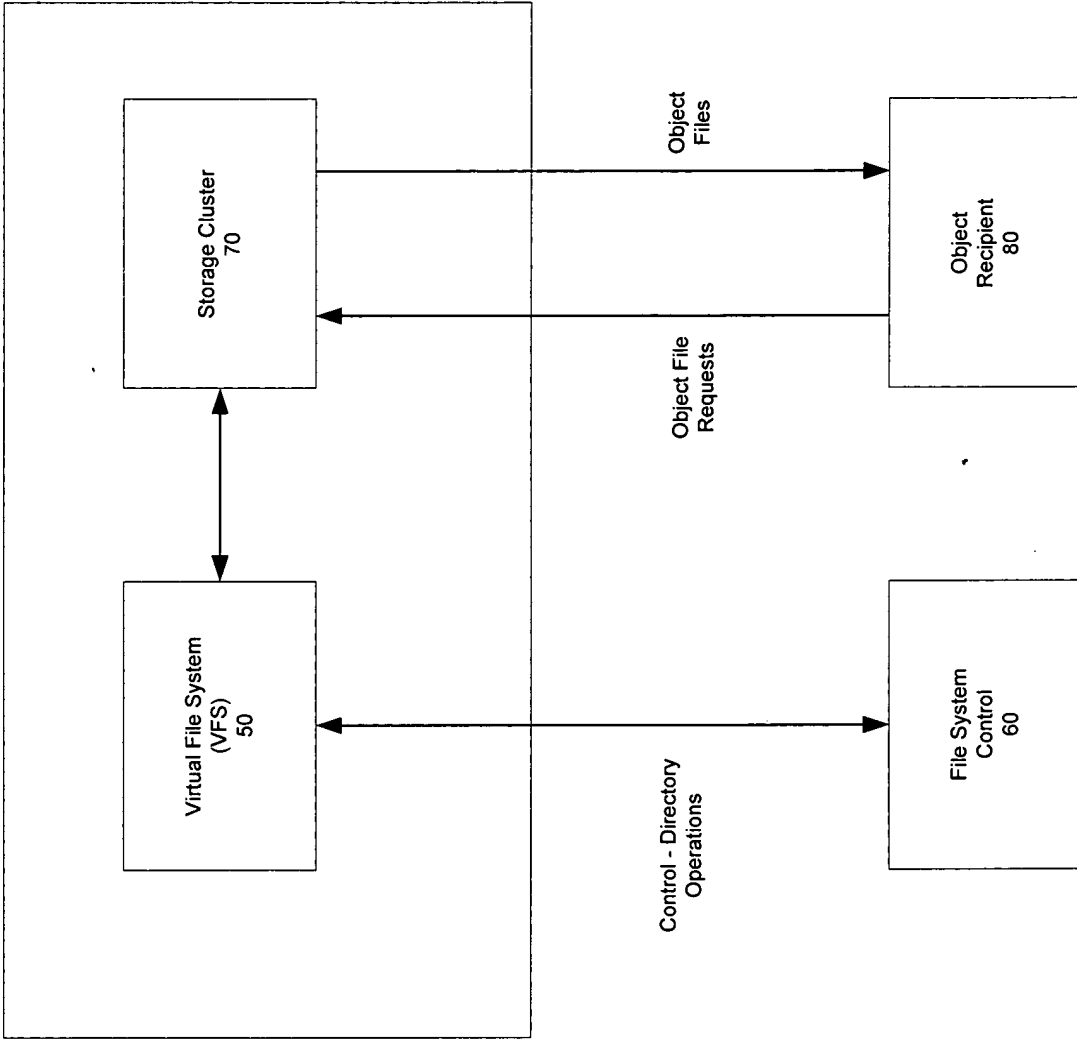


Figure 1

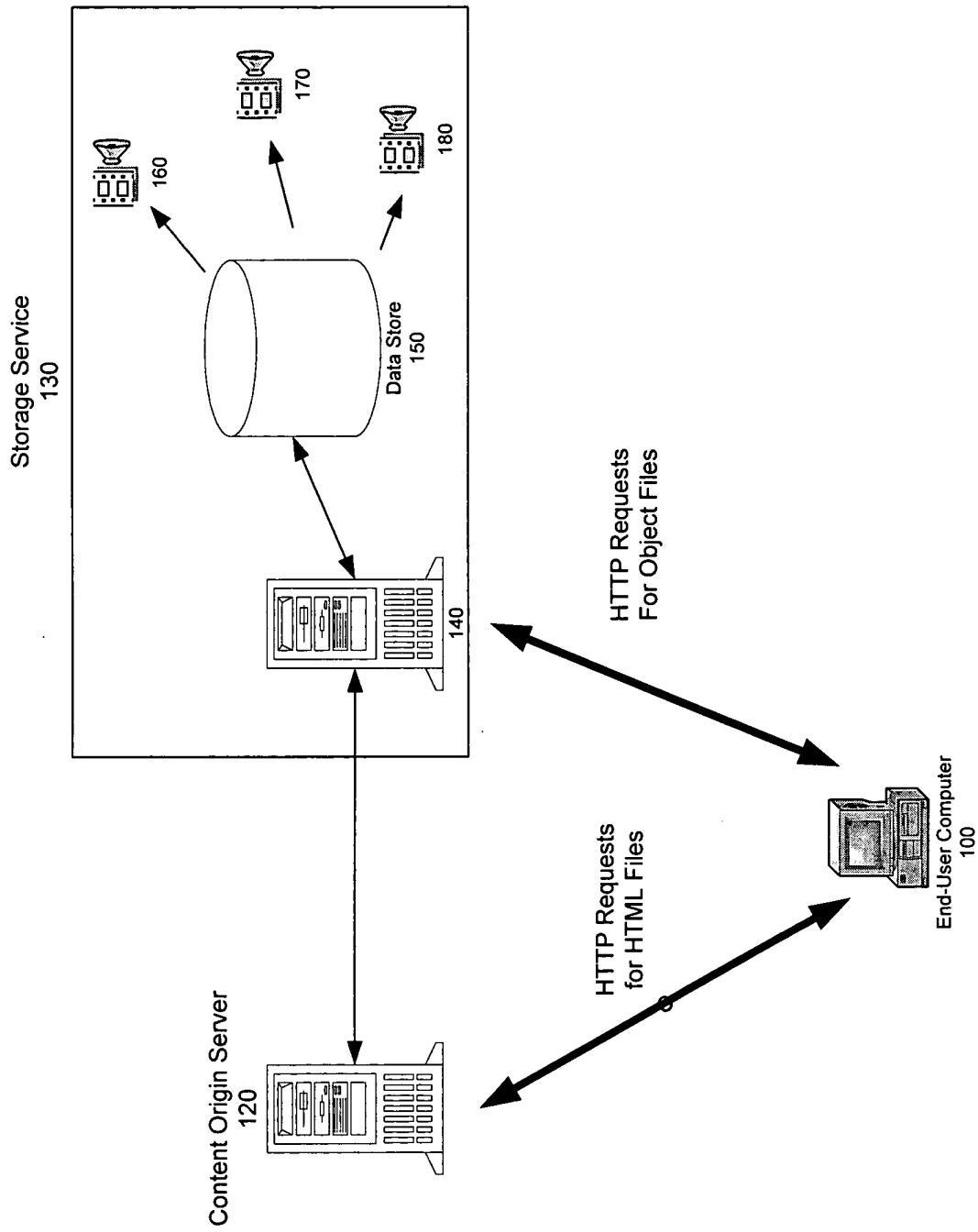


Figure 2

Copyright © 2006

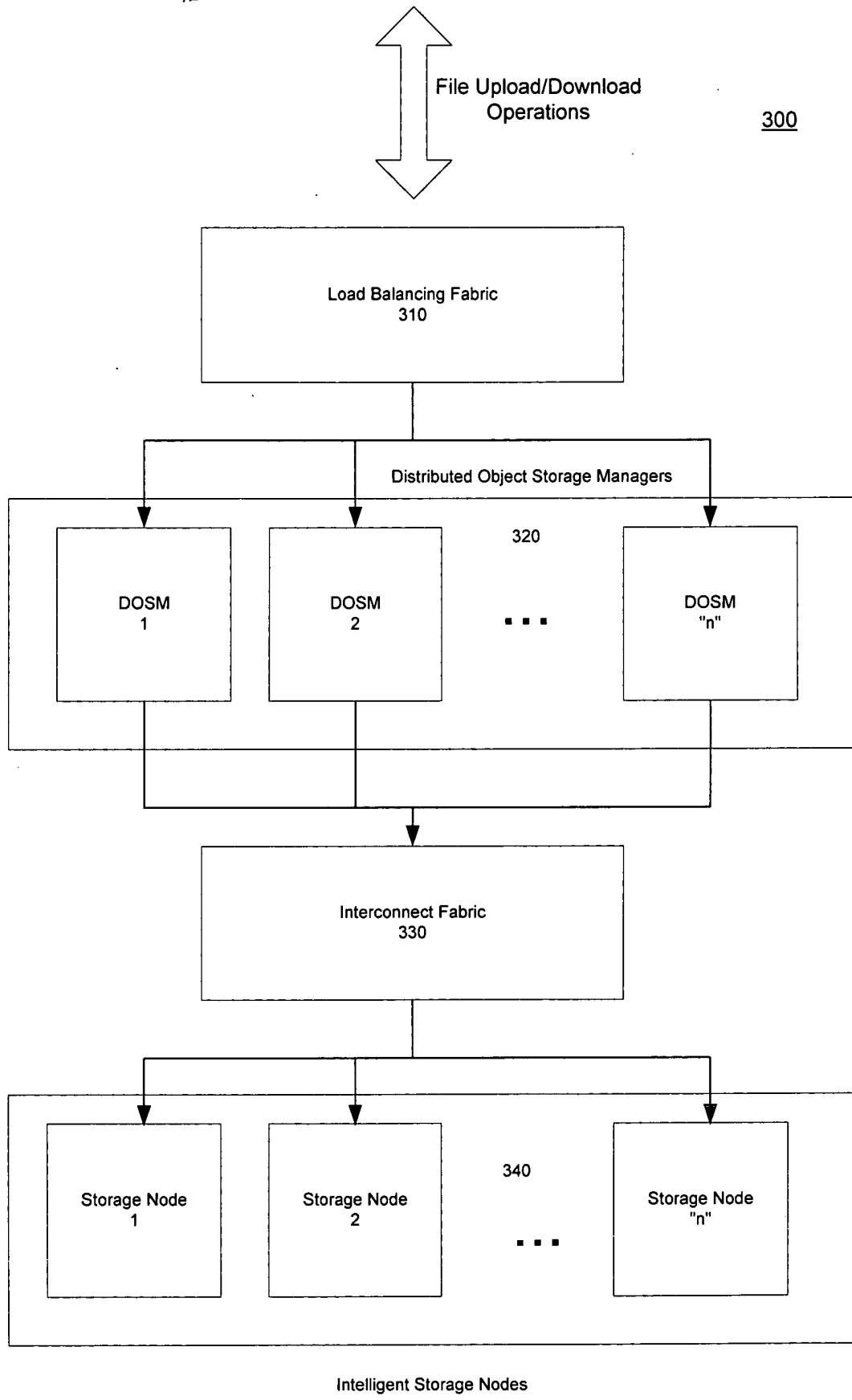


Figure 3

000001 000000

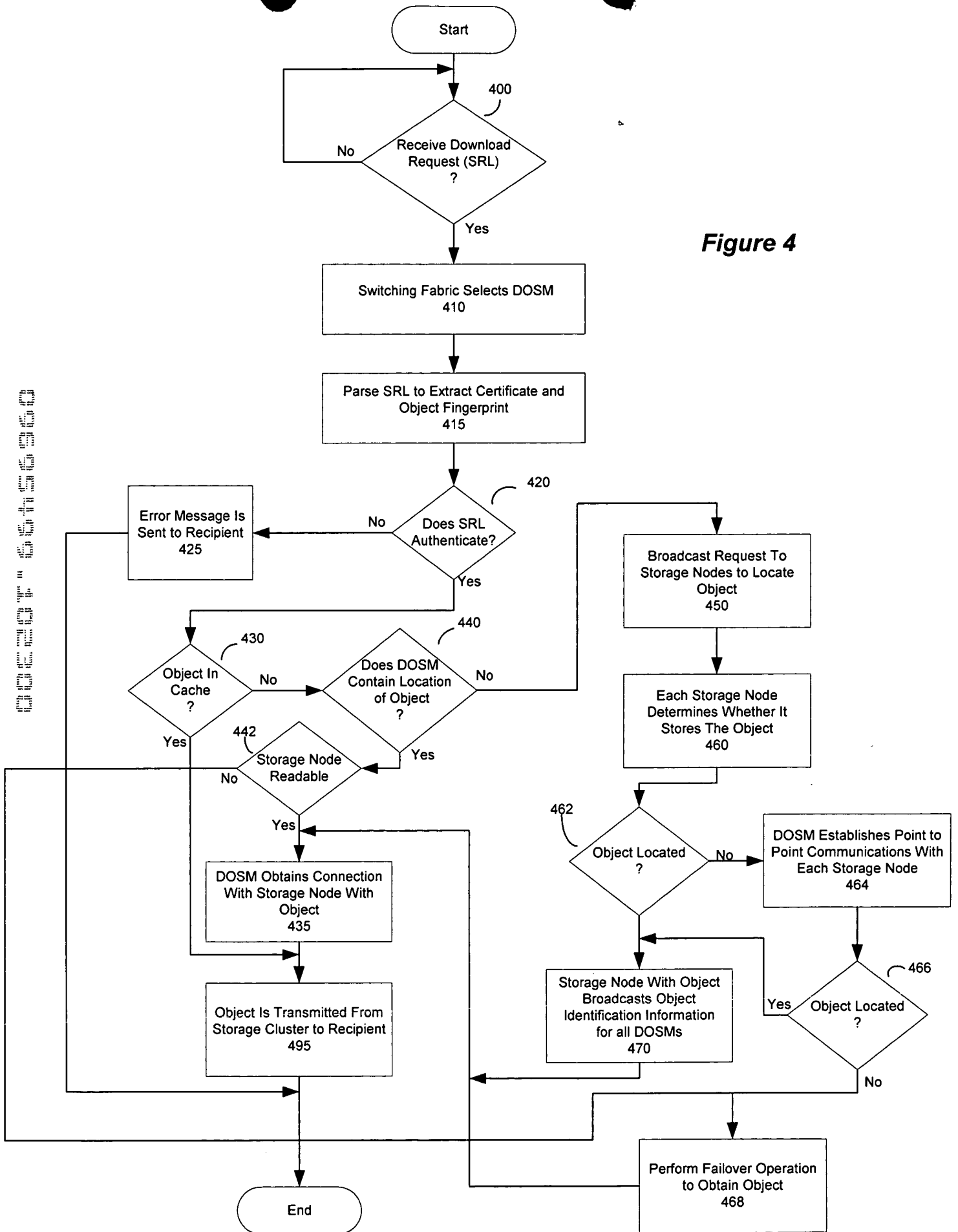


Figure 4

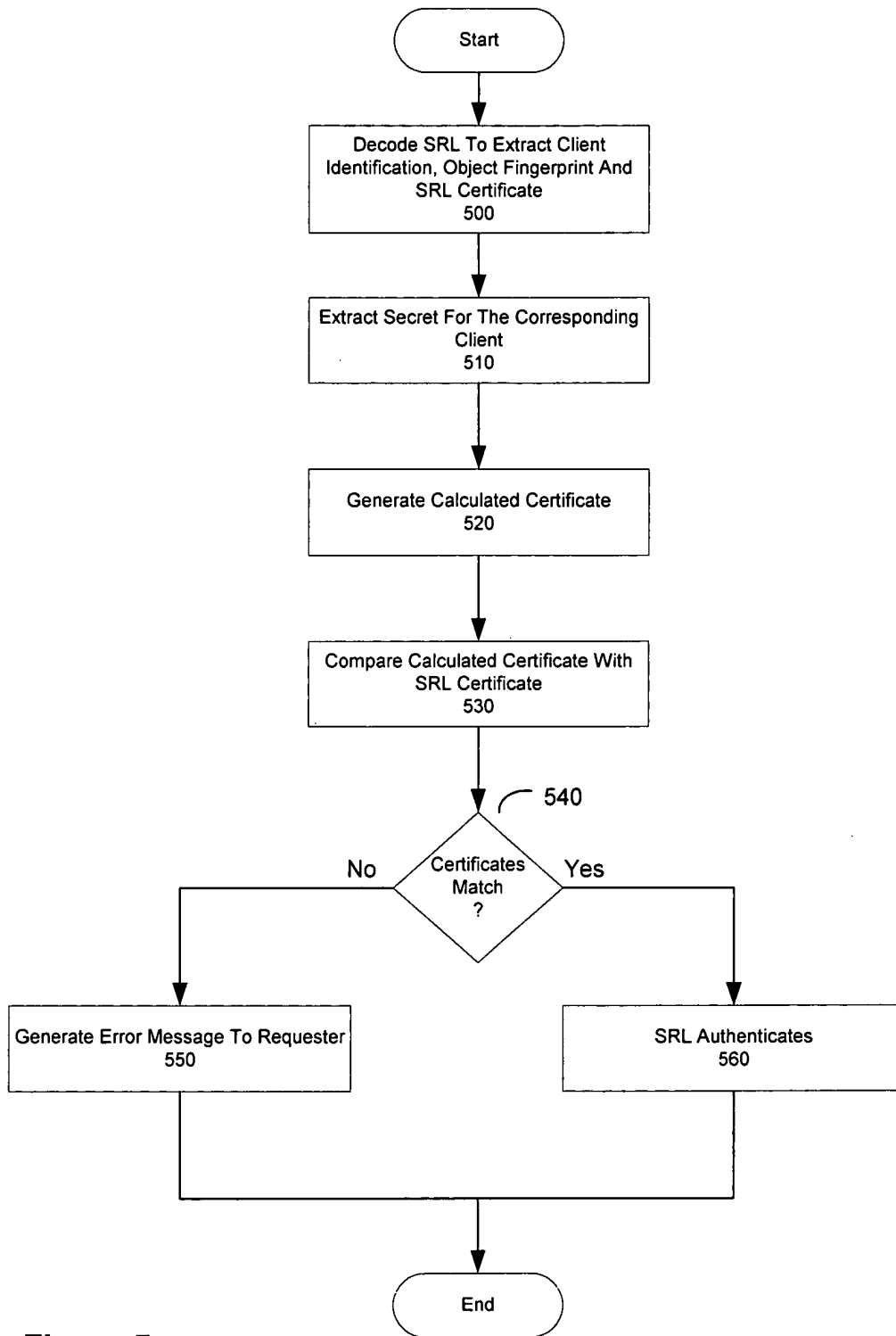
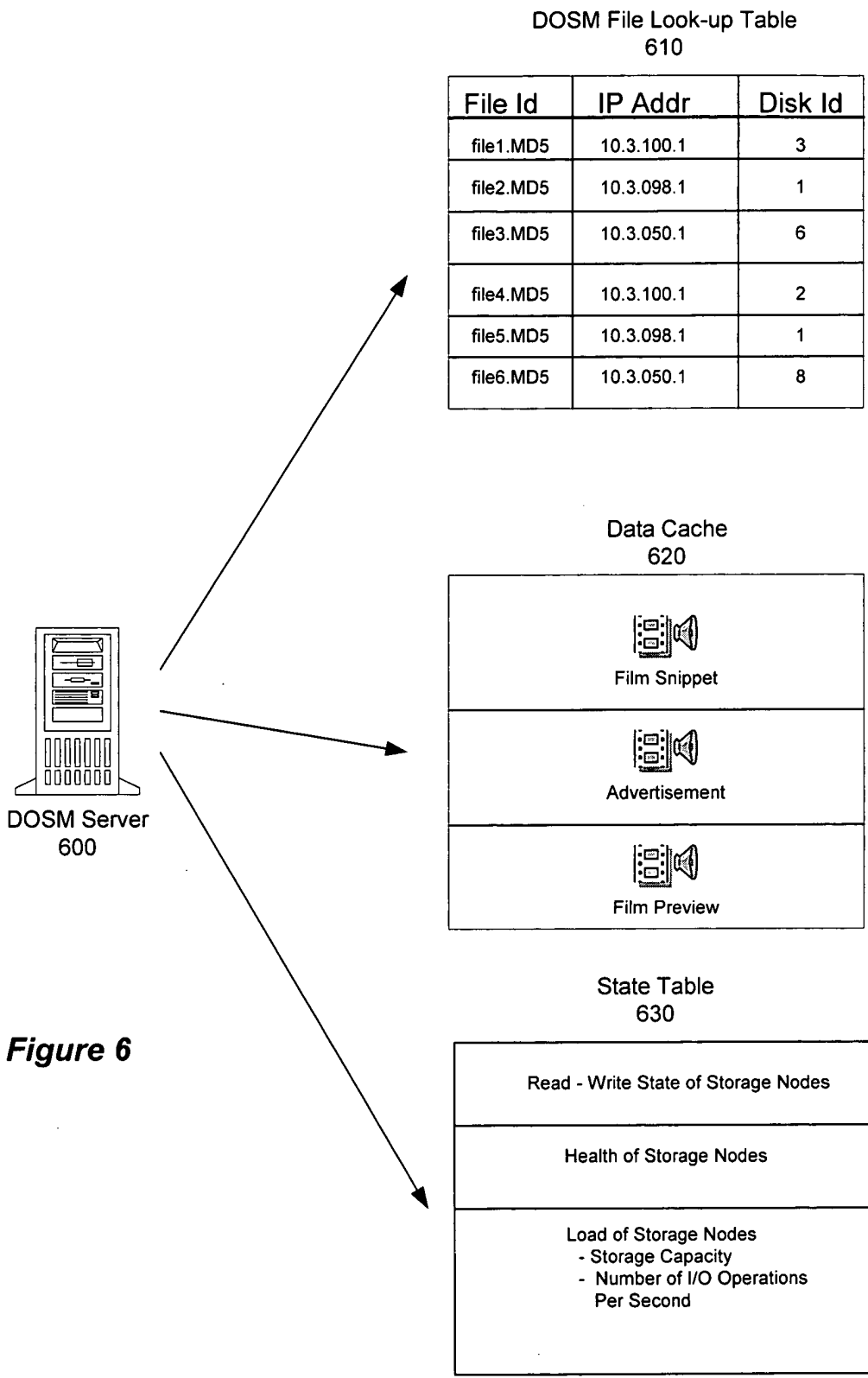


Figure 5



**Figure 6**

700

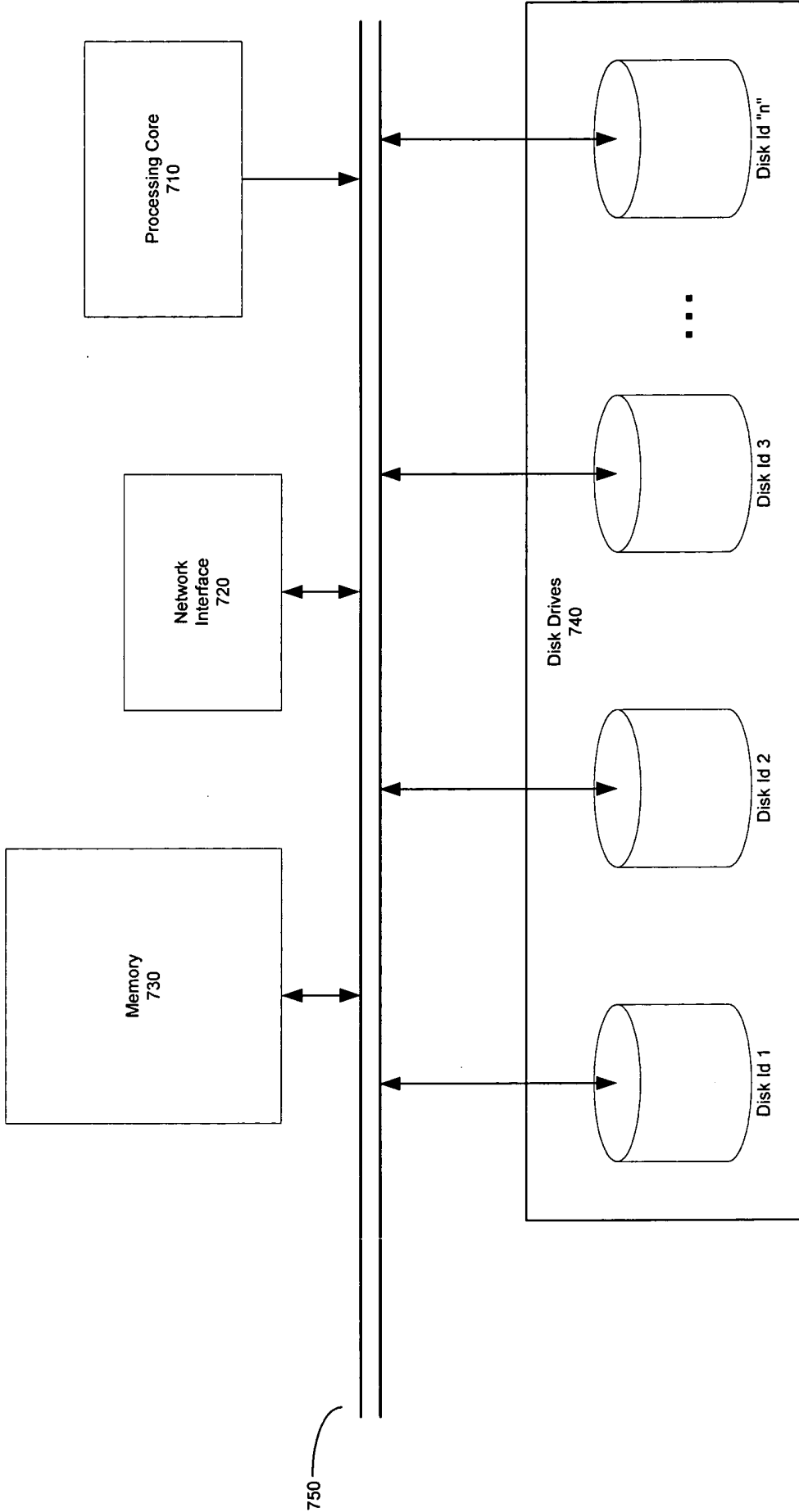


Figure 7

6626207 6626207

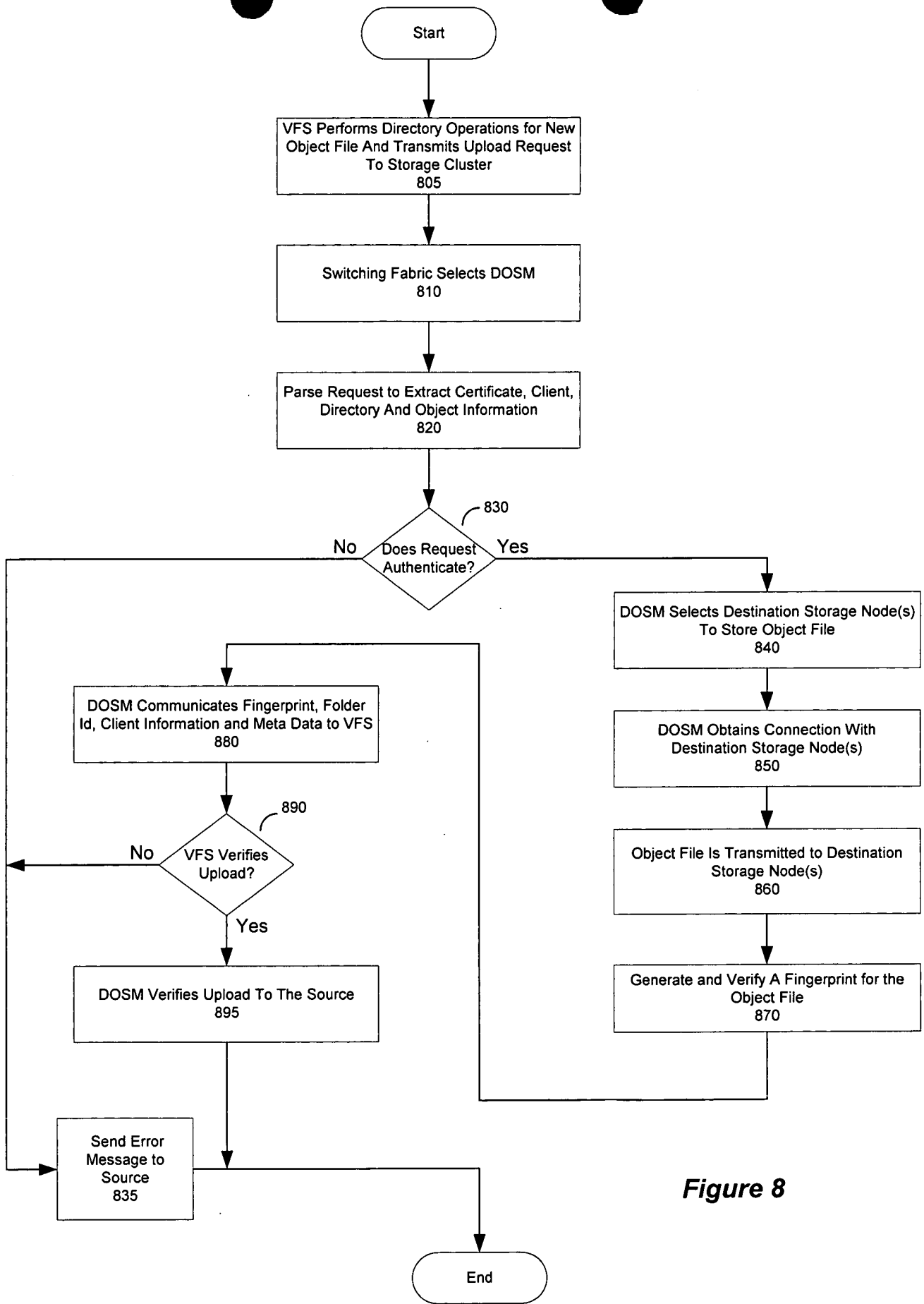


Figure 8





Content  
File Upload/Download  
Operations

Load Balancing Fabric  
310

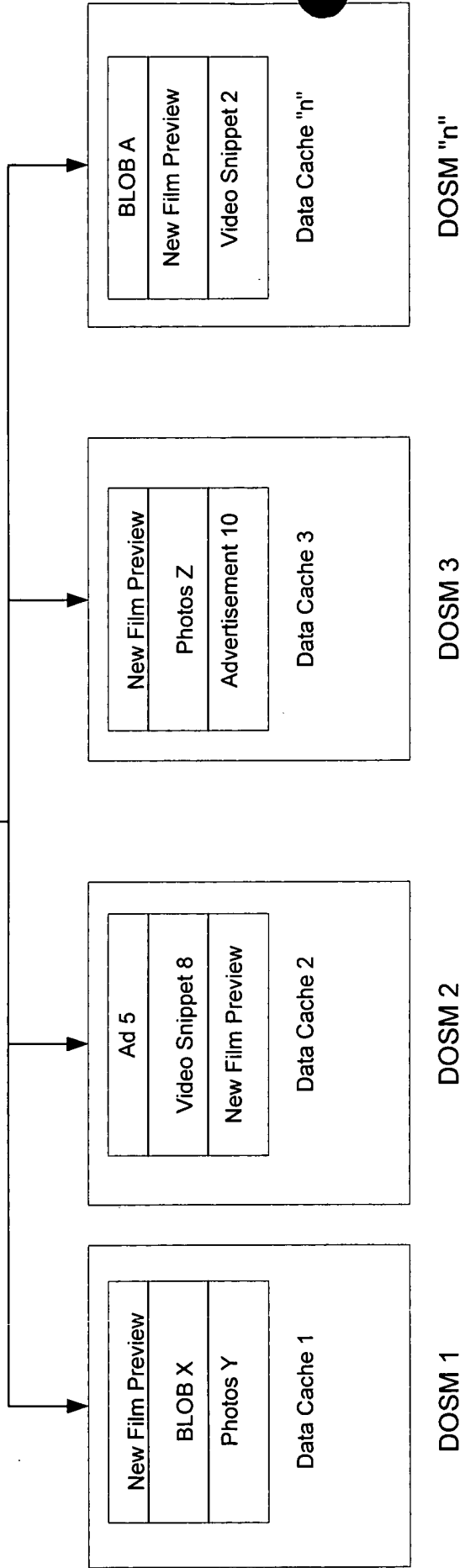


Figure 10

OBJECT SERVER

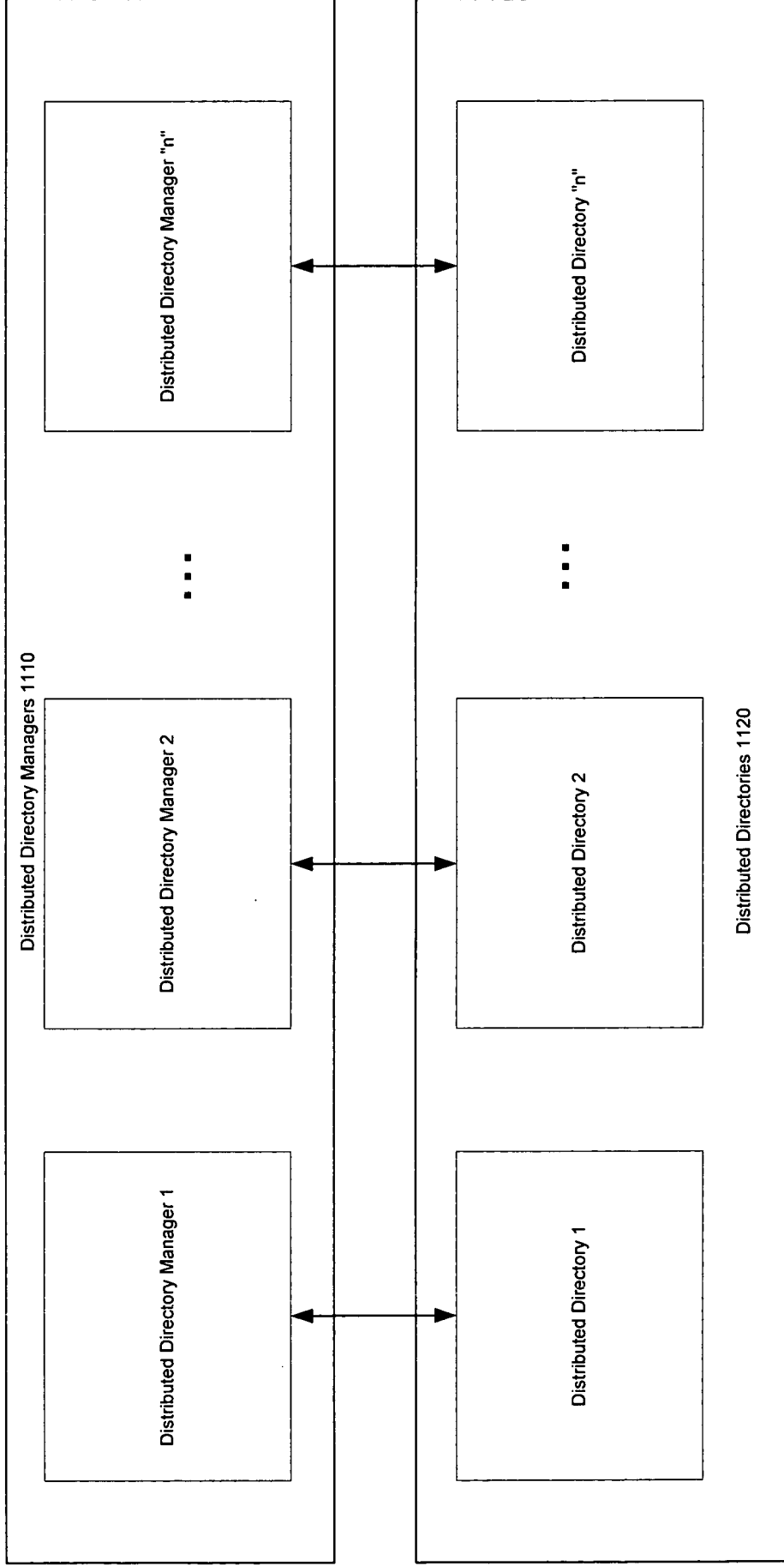
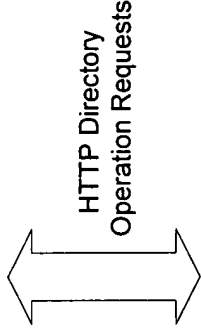
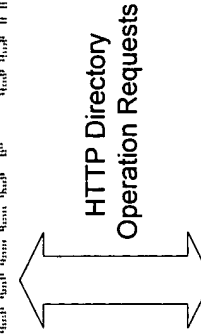
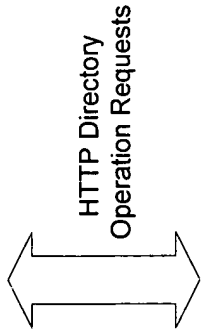


Figure 11

Customer Table

Customer Table

Customer Id	Customer Name	Customer Reserved Fields
1	Customer A	[Customer stores data ...]
2	Customer B	[Customer stores data ...]
3	Customer C	[Customer stores data ...]
4	Customer D	[Customer stores data ...]

1200

Folder Table

Customer Id	Folder Id	Folder Parent Id	Metadata
3	2	-	[Reserved]
3	100	2	[Reserved]
3	251	2	[Reserved]
3	166	251	[Reserved]

1210

File Table

Customer Id	File Handle	Folder Id	Folder Parent Id	Metadata
3	52.MD5	100	2	[Reserved]
3	55.MD5	100	2	[Reserved]
3	99.MD5	166	251	[Reserved]
3	67.MD5	166	251	[Reserved]

1220

Figure 12



CONFIDENTIAL

(From Figure 13A)

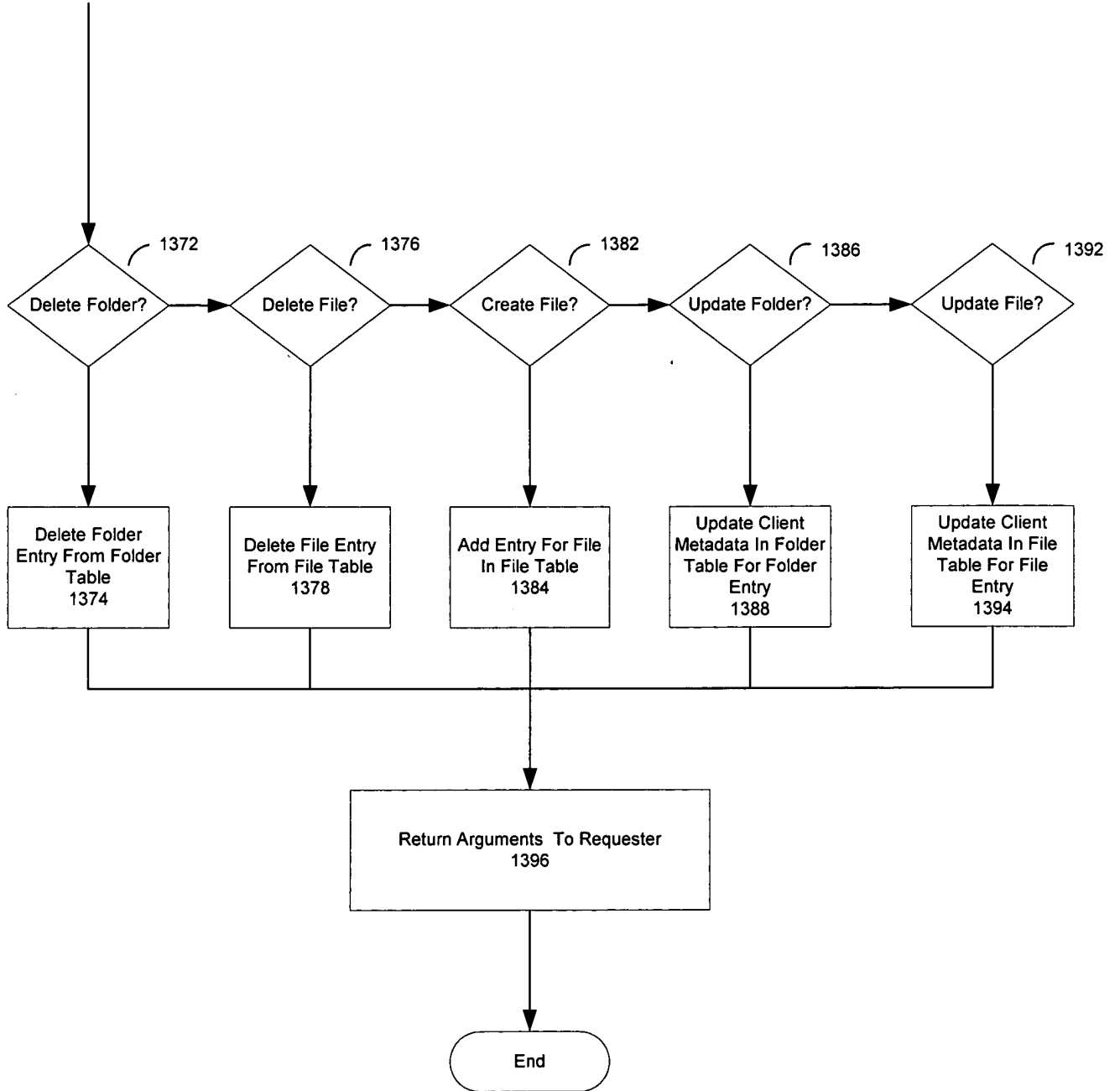


Figure 13B

Patent 6,446,660

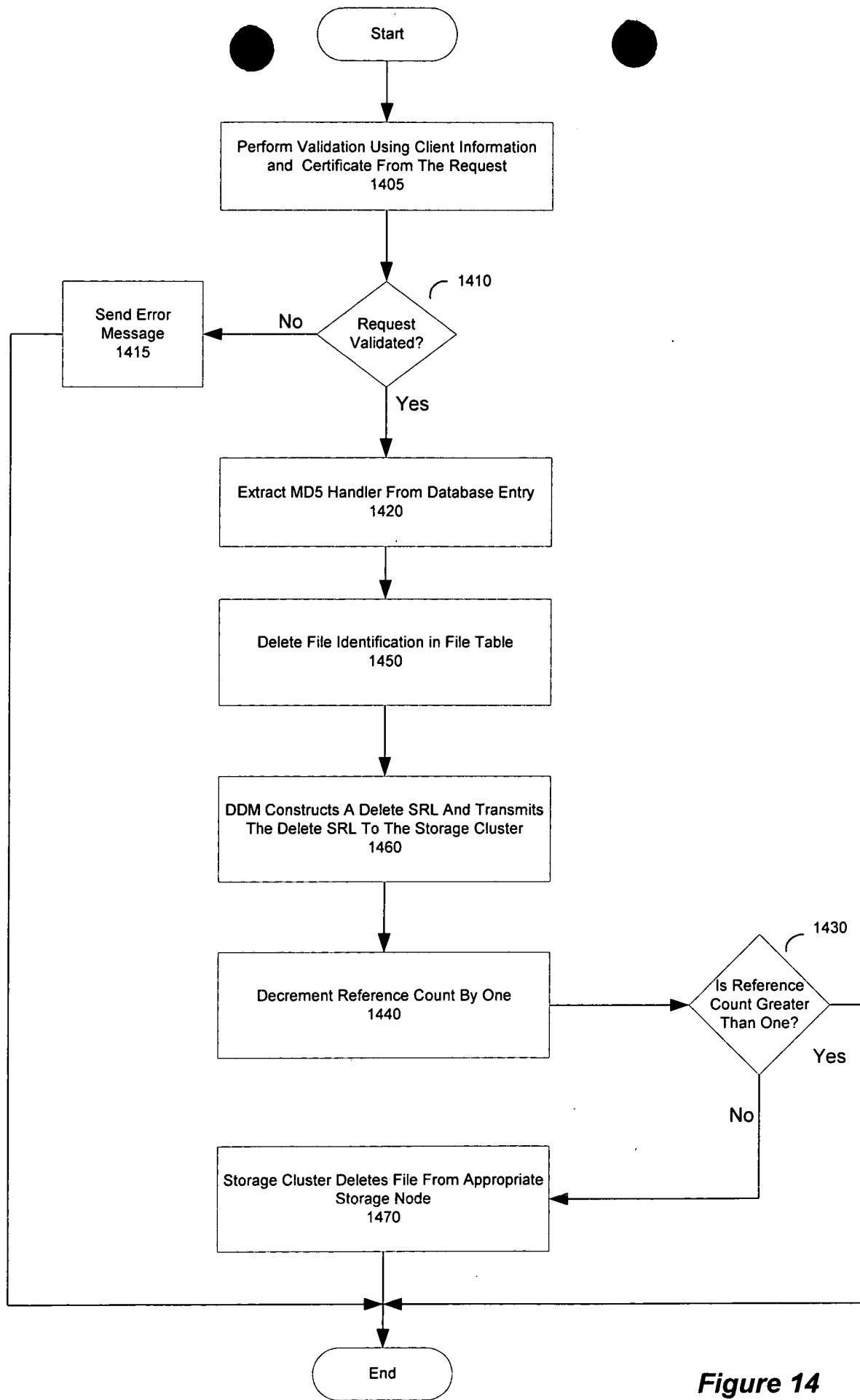


Figure 14

SECRET 1510 1520 1530

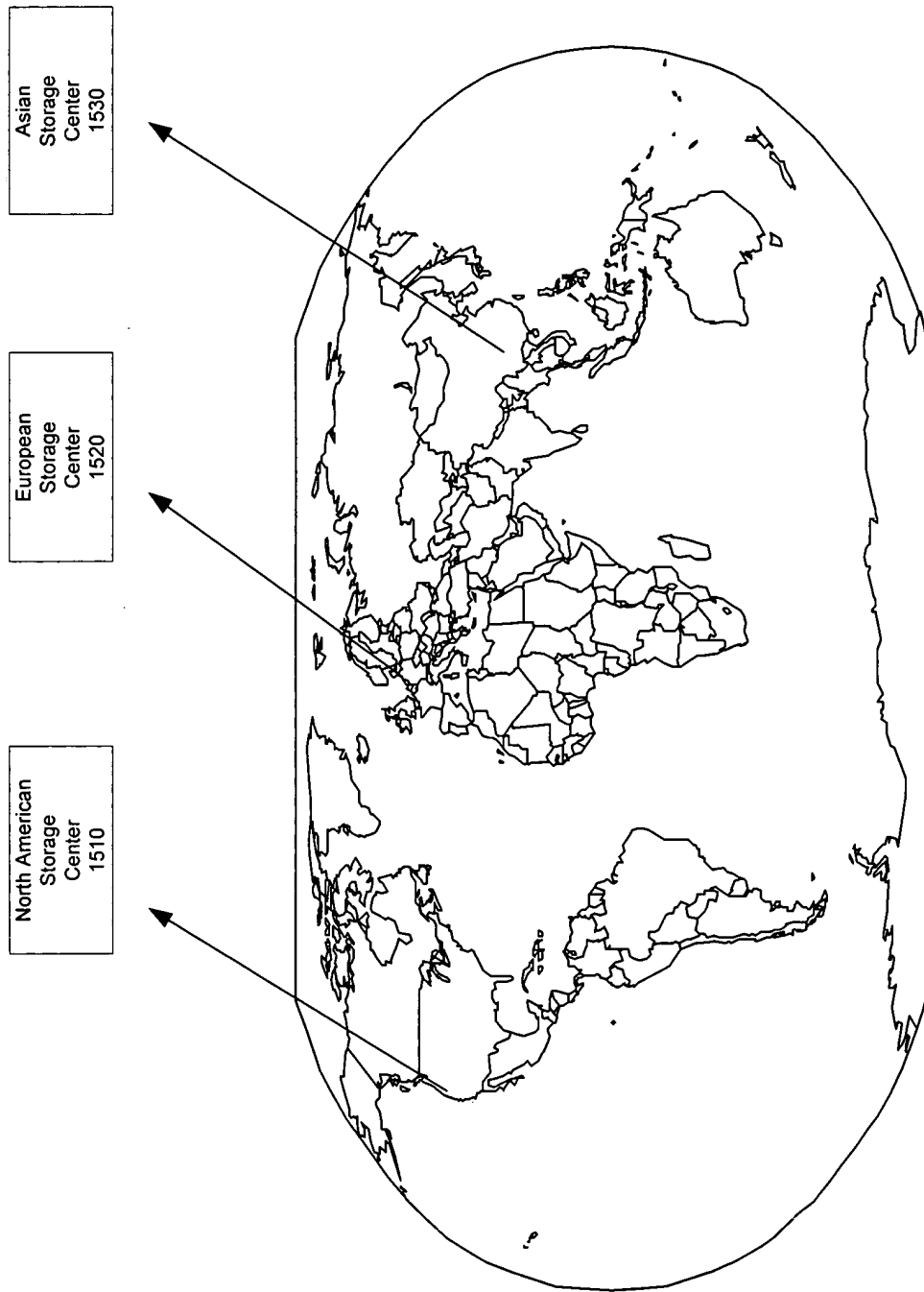


Figure 15



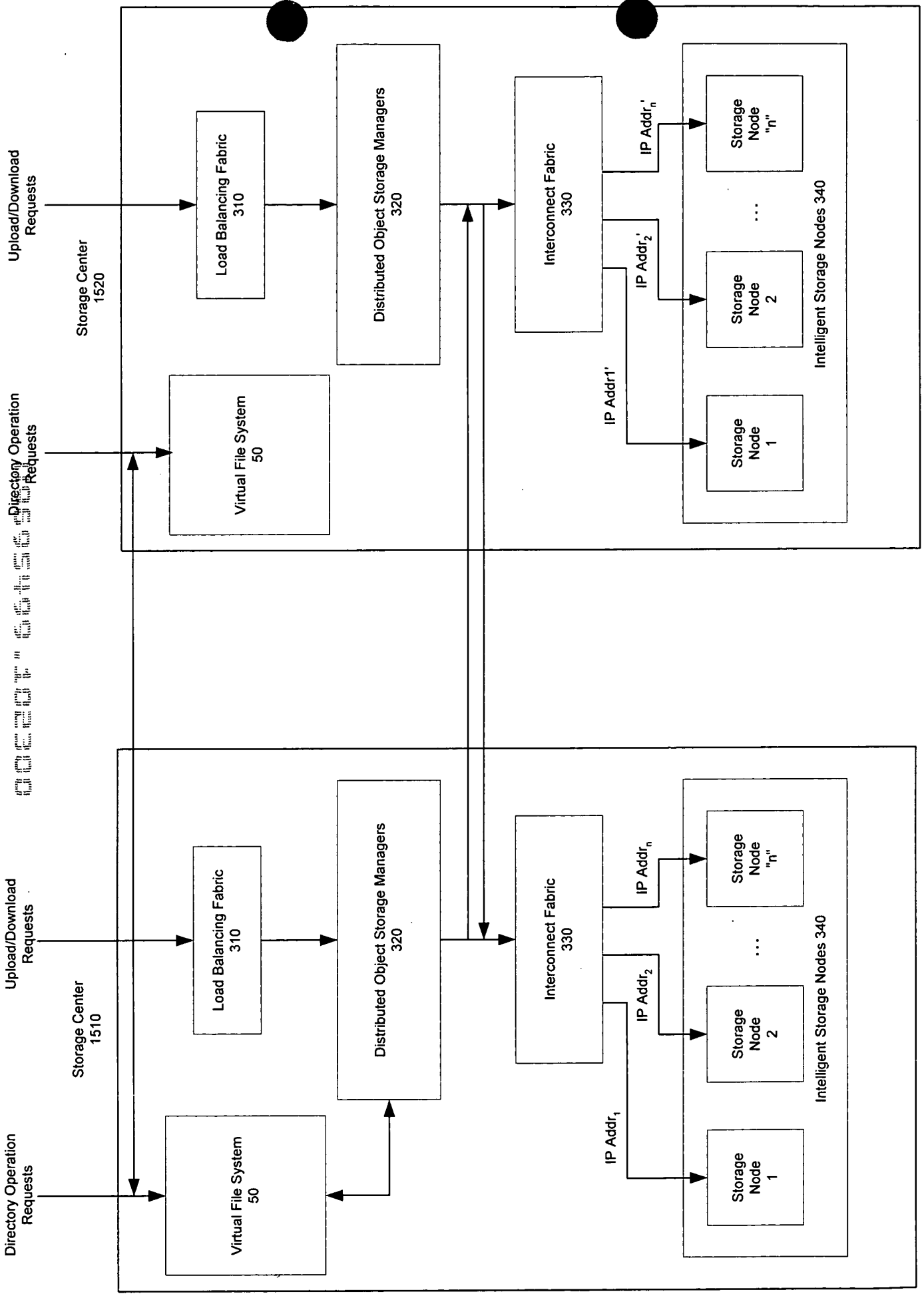


Figure 16

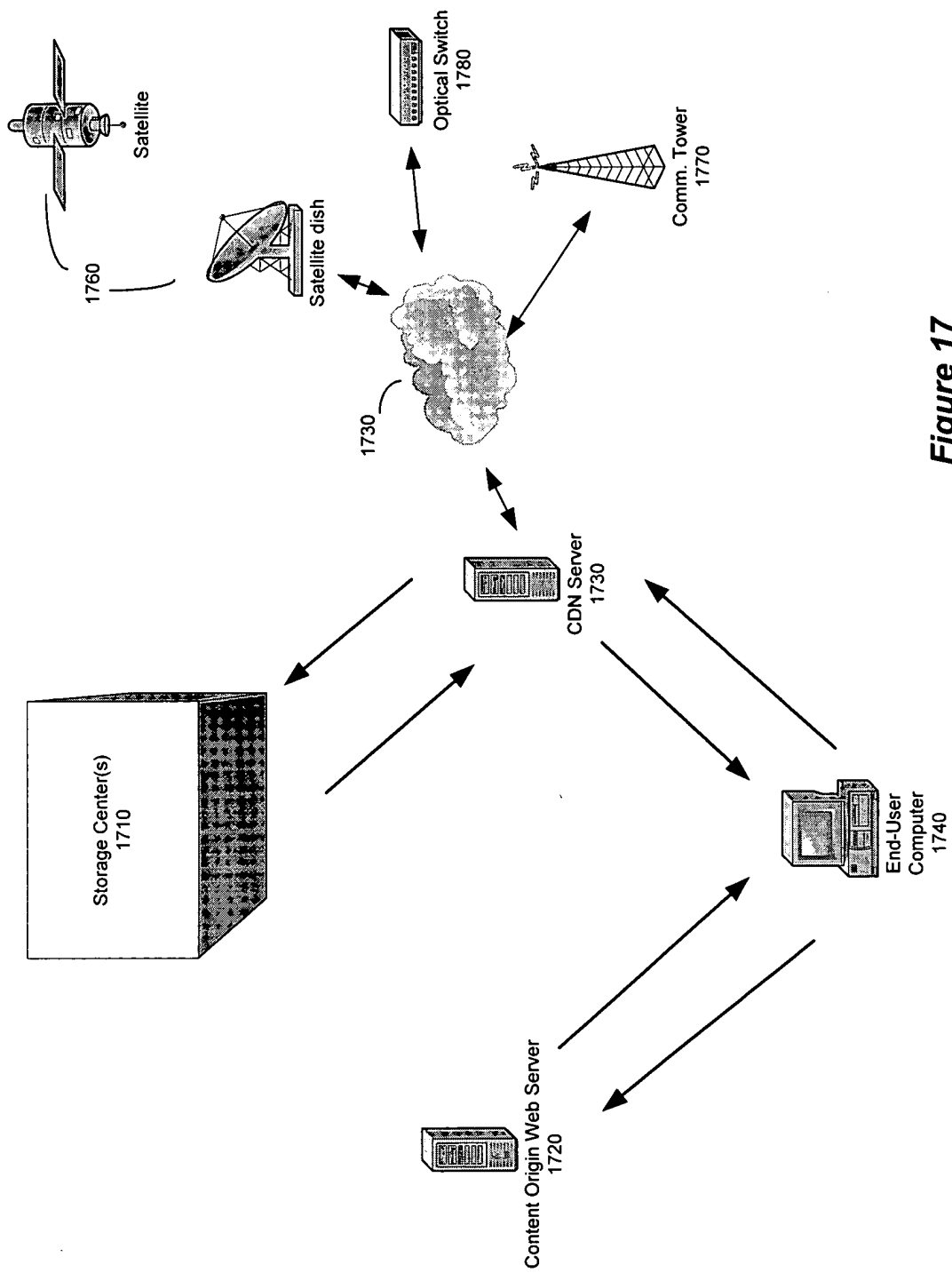


Figure 17



Patent 6,615,950

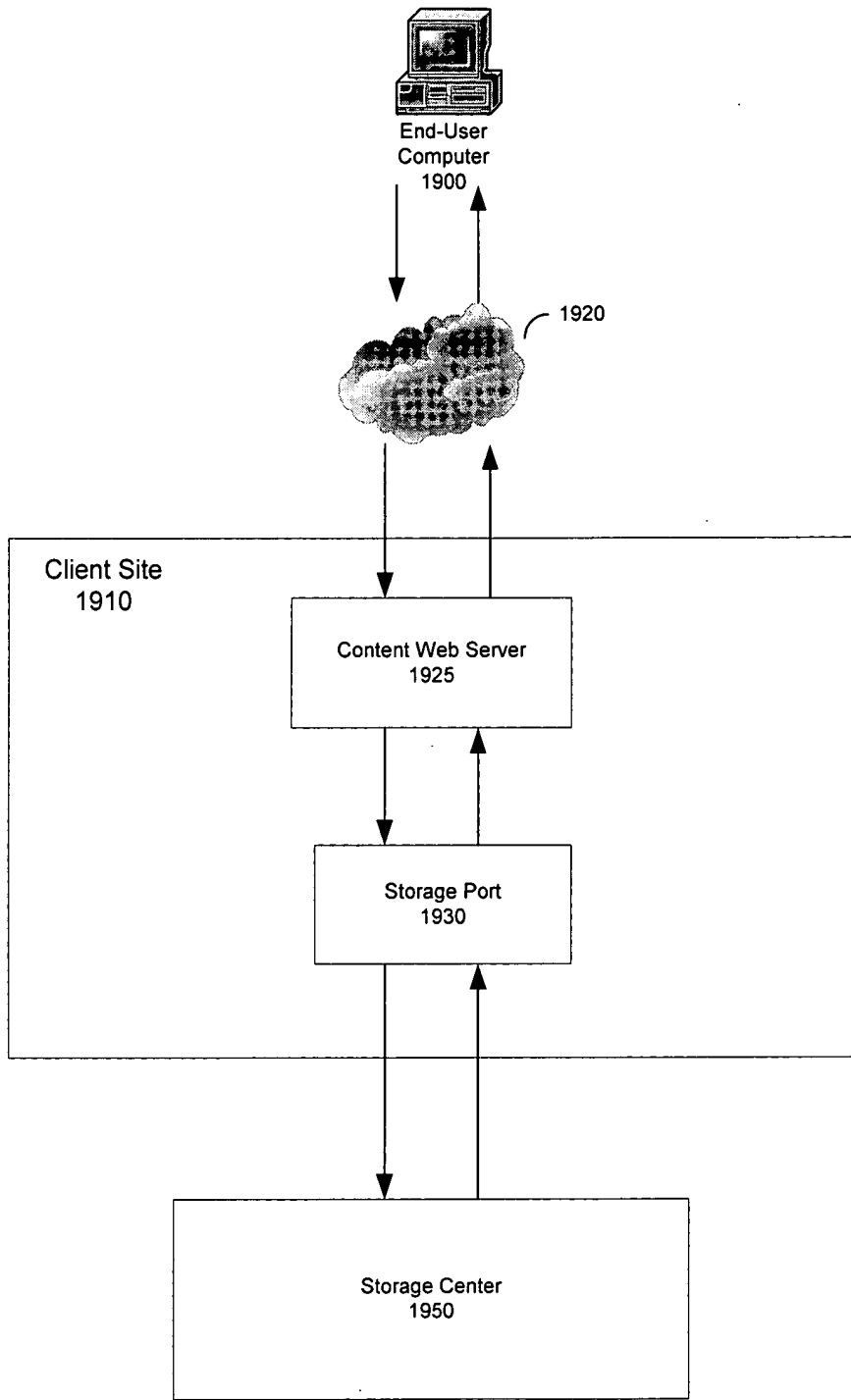


Figure 19

20090716 14:56:00

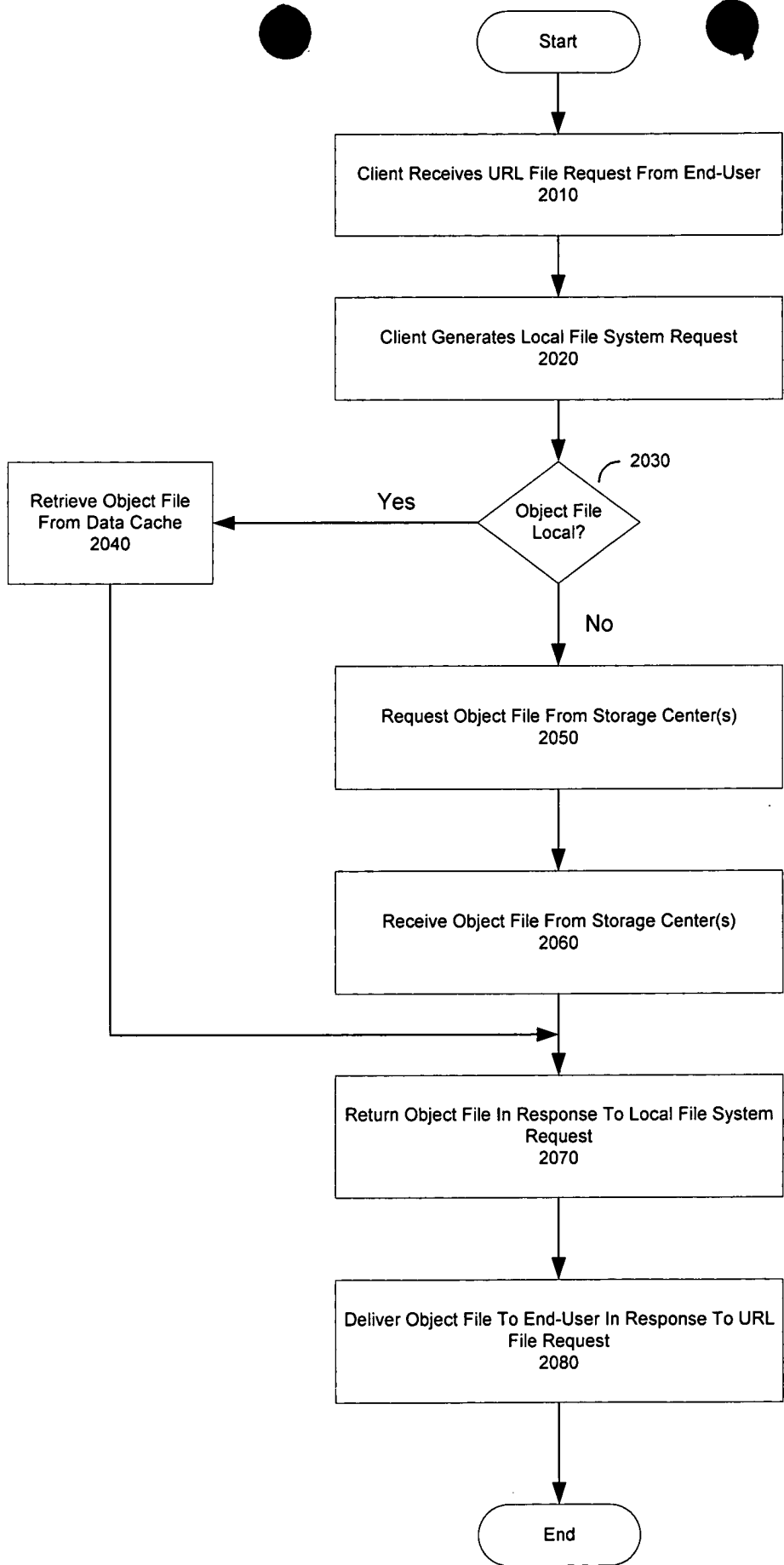


Figure 20

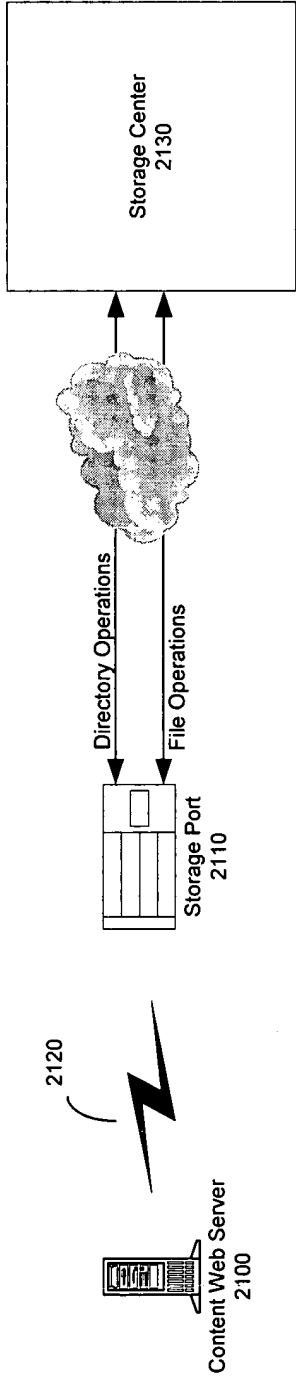


Figure 21a

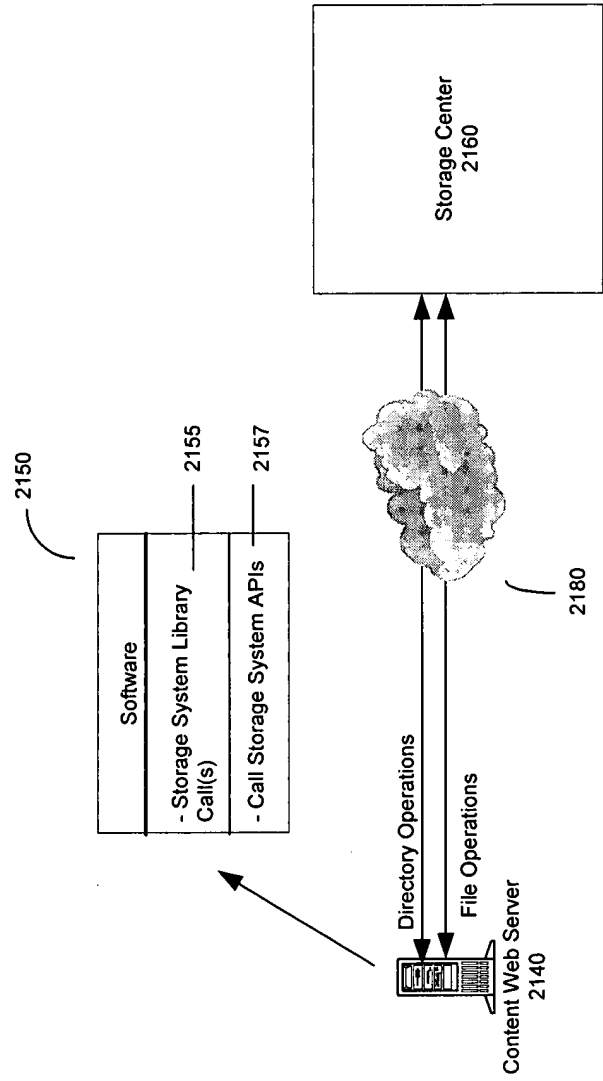


Figure 21b

Storage Port  
2200

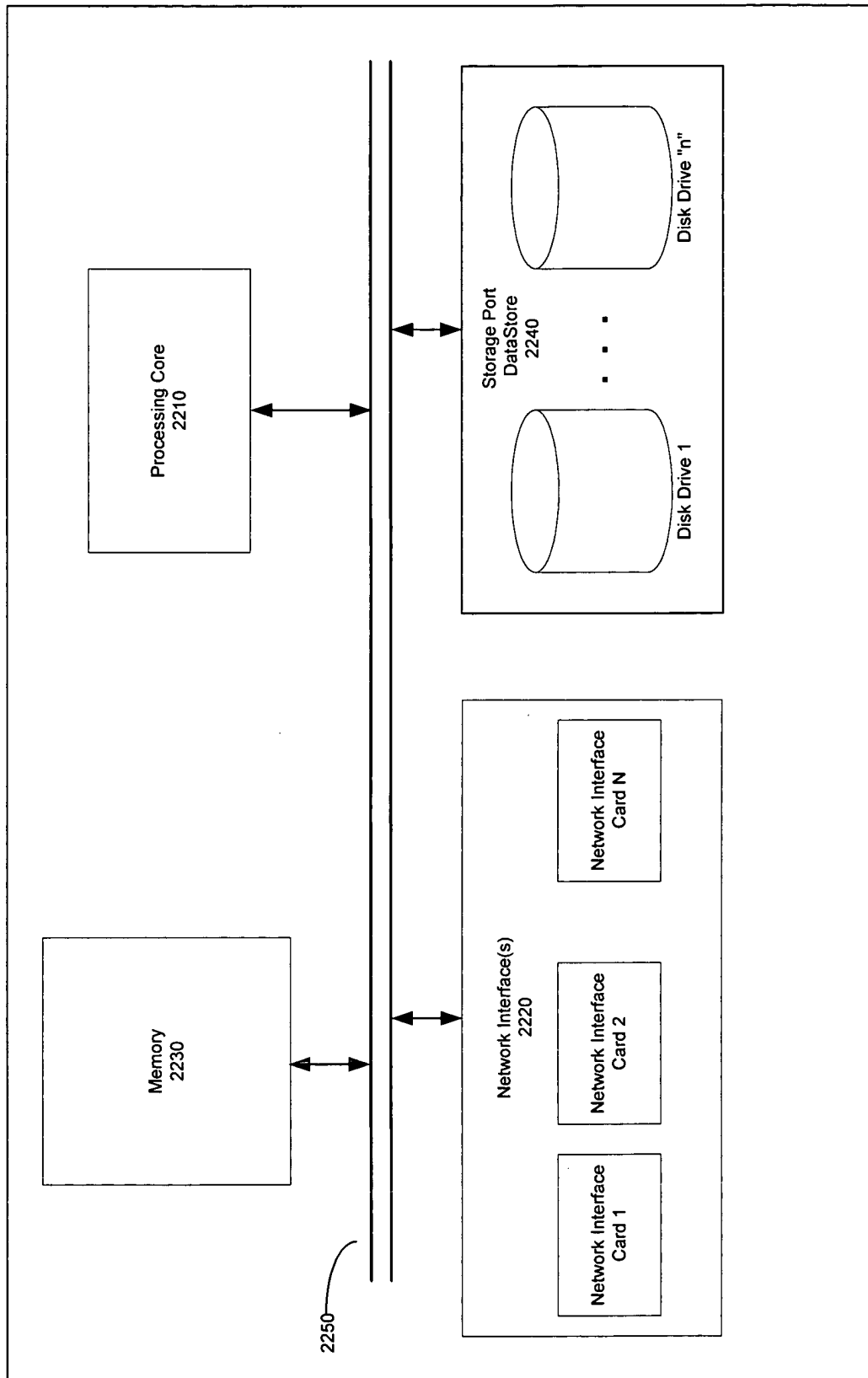


Figure 22

Client Local File System

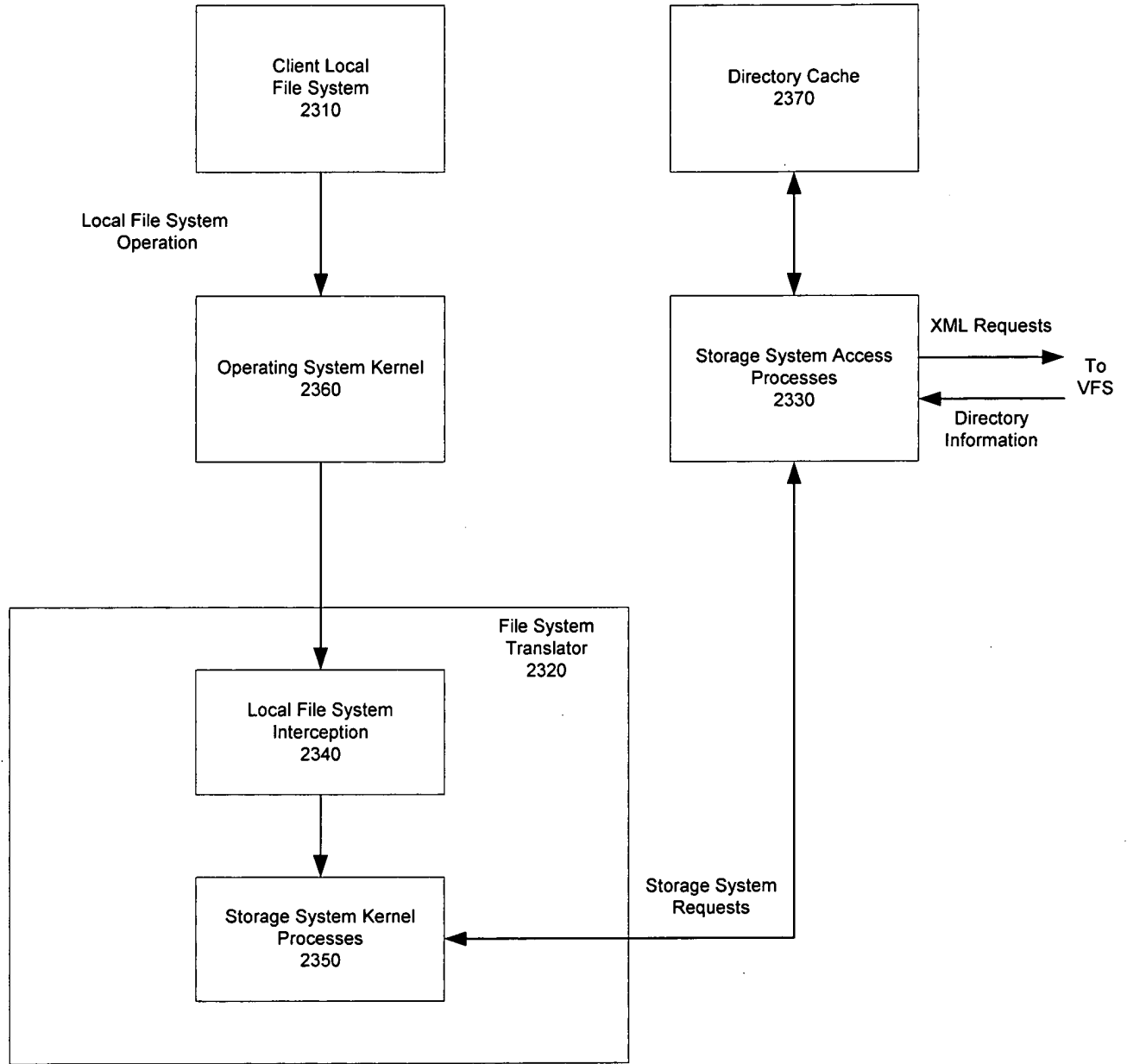
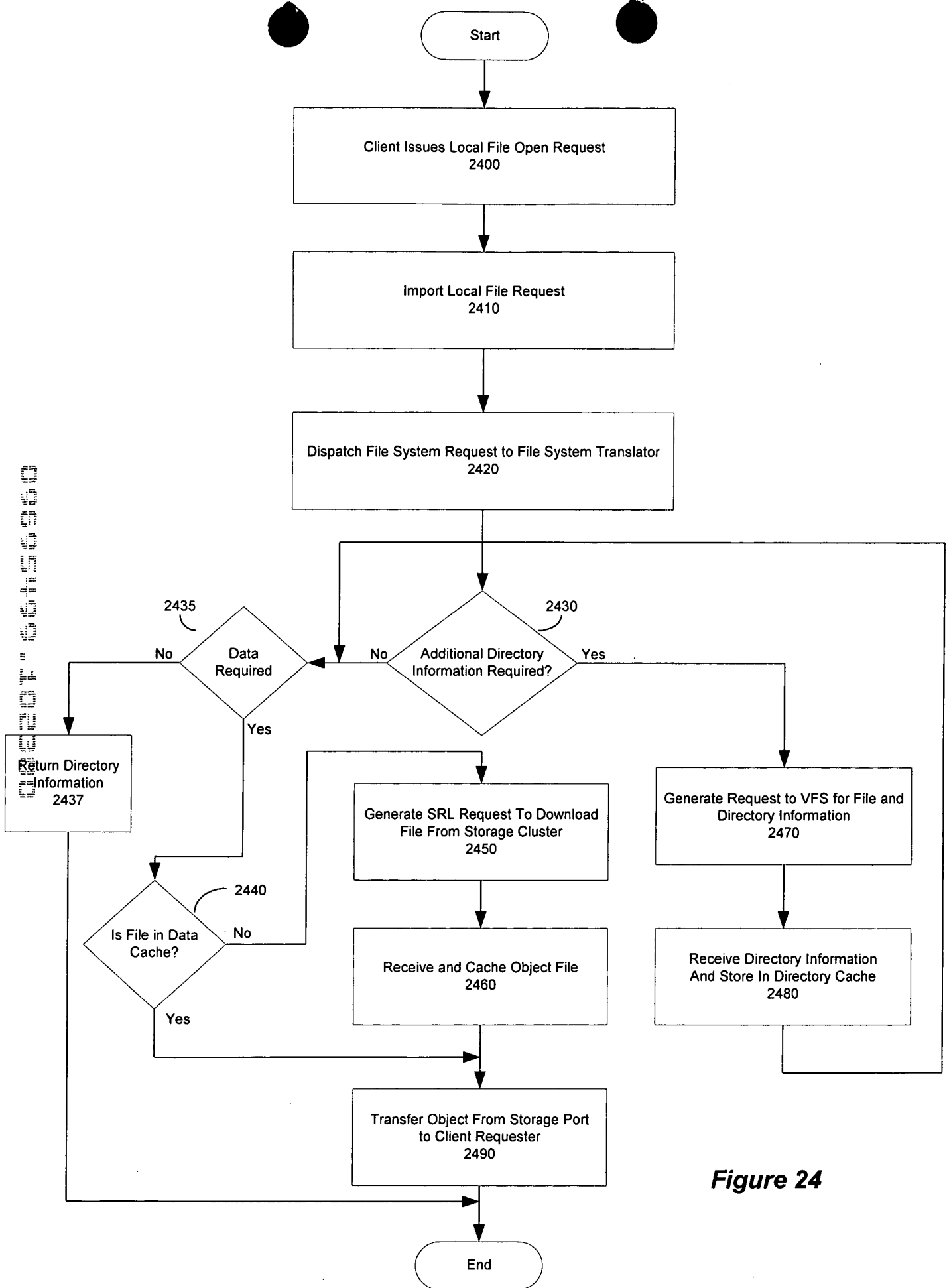


Figure 23





**Figure 24**





Copyright © 2000

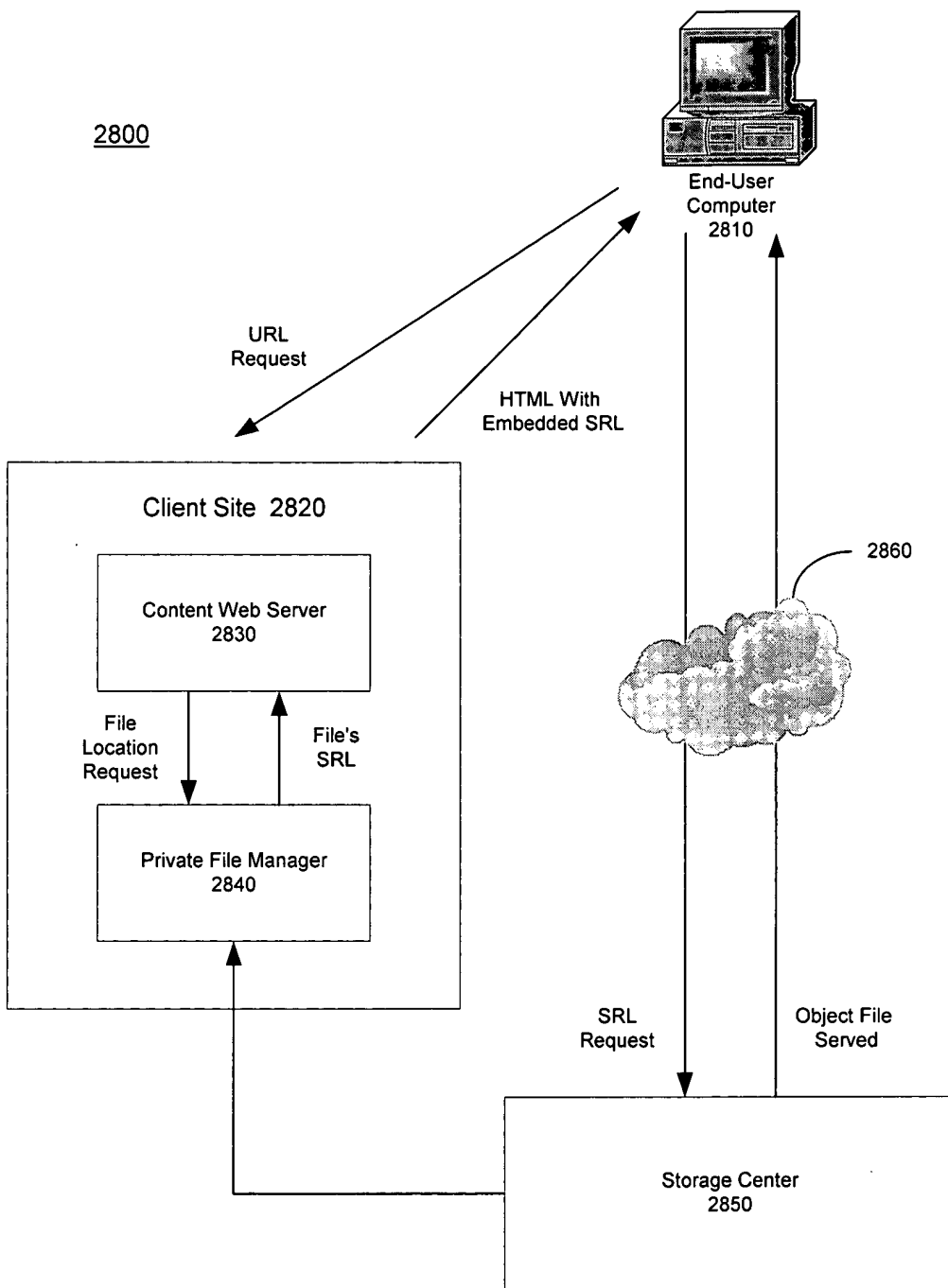


Figure 27

object 669696

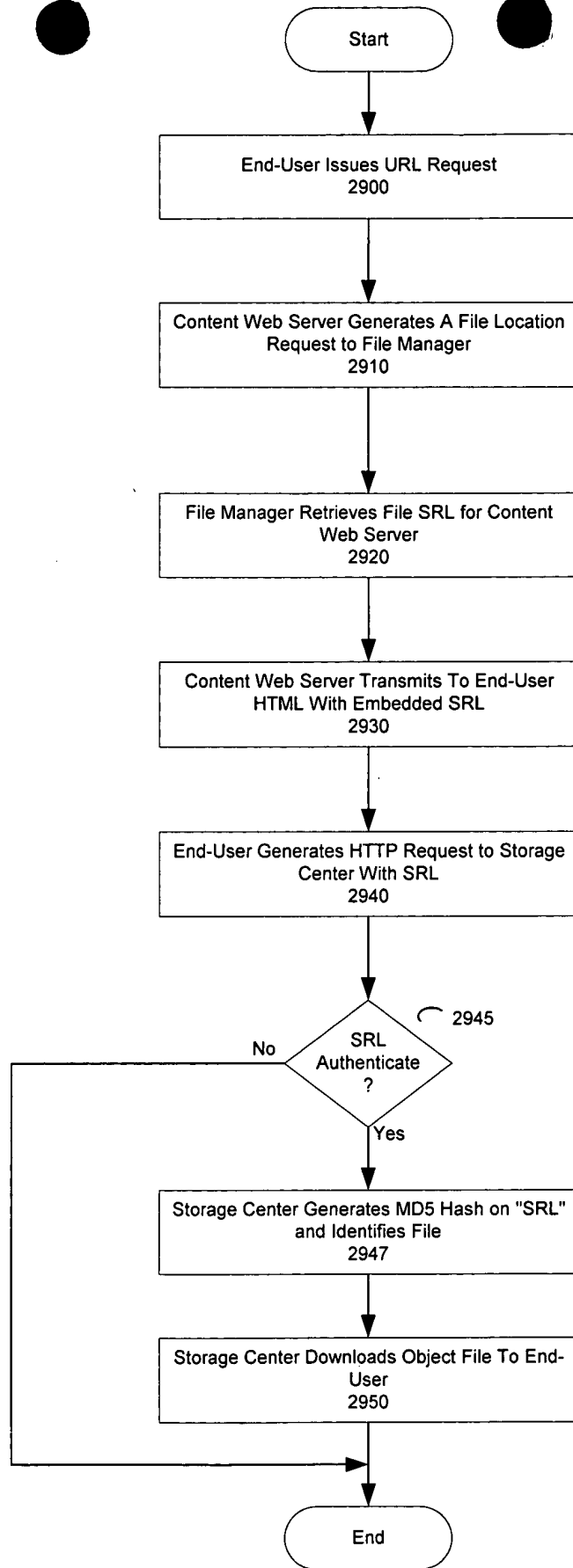


Figure 28

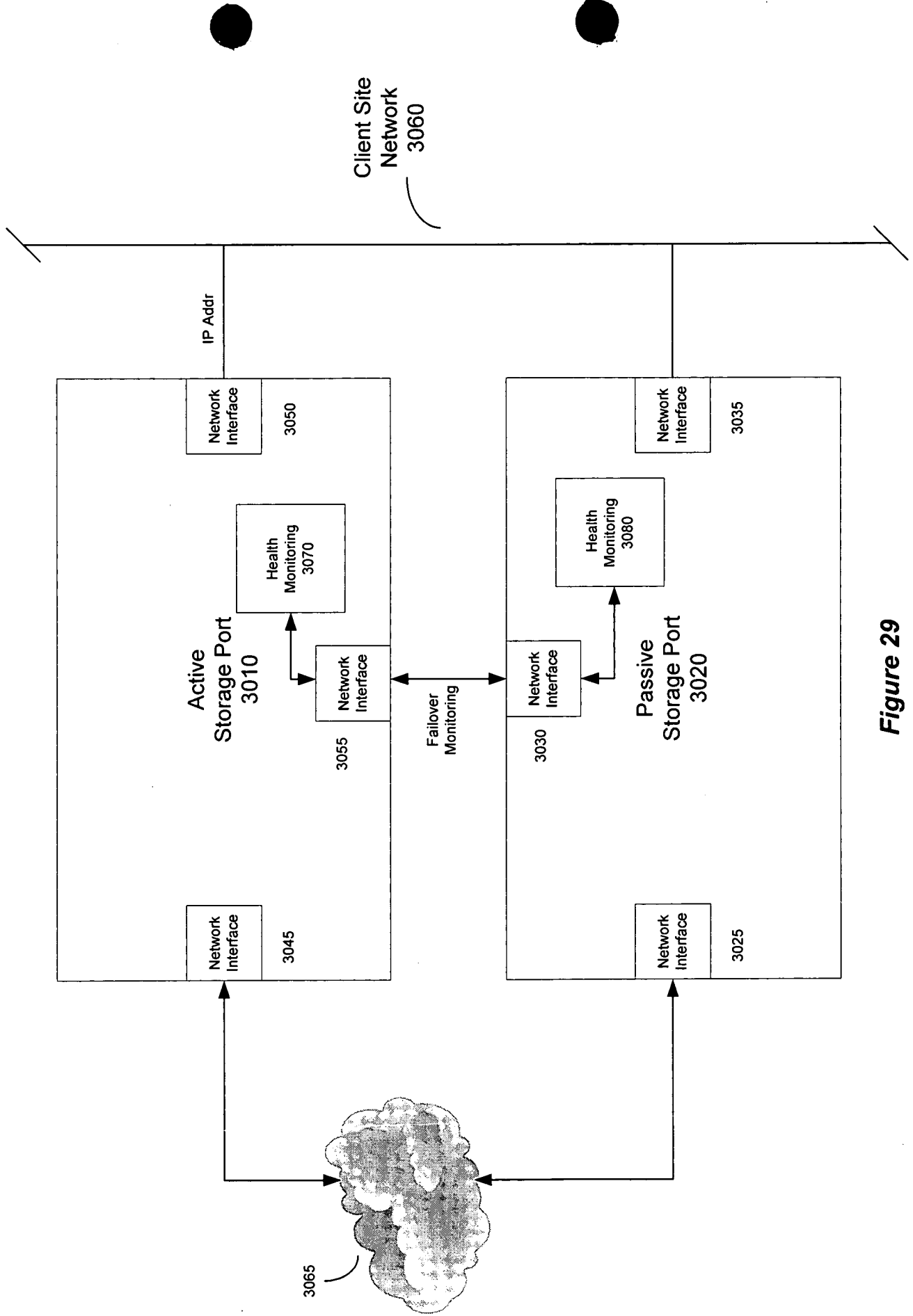


Figure 29

66207 64596

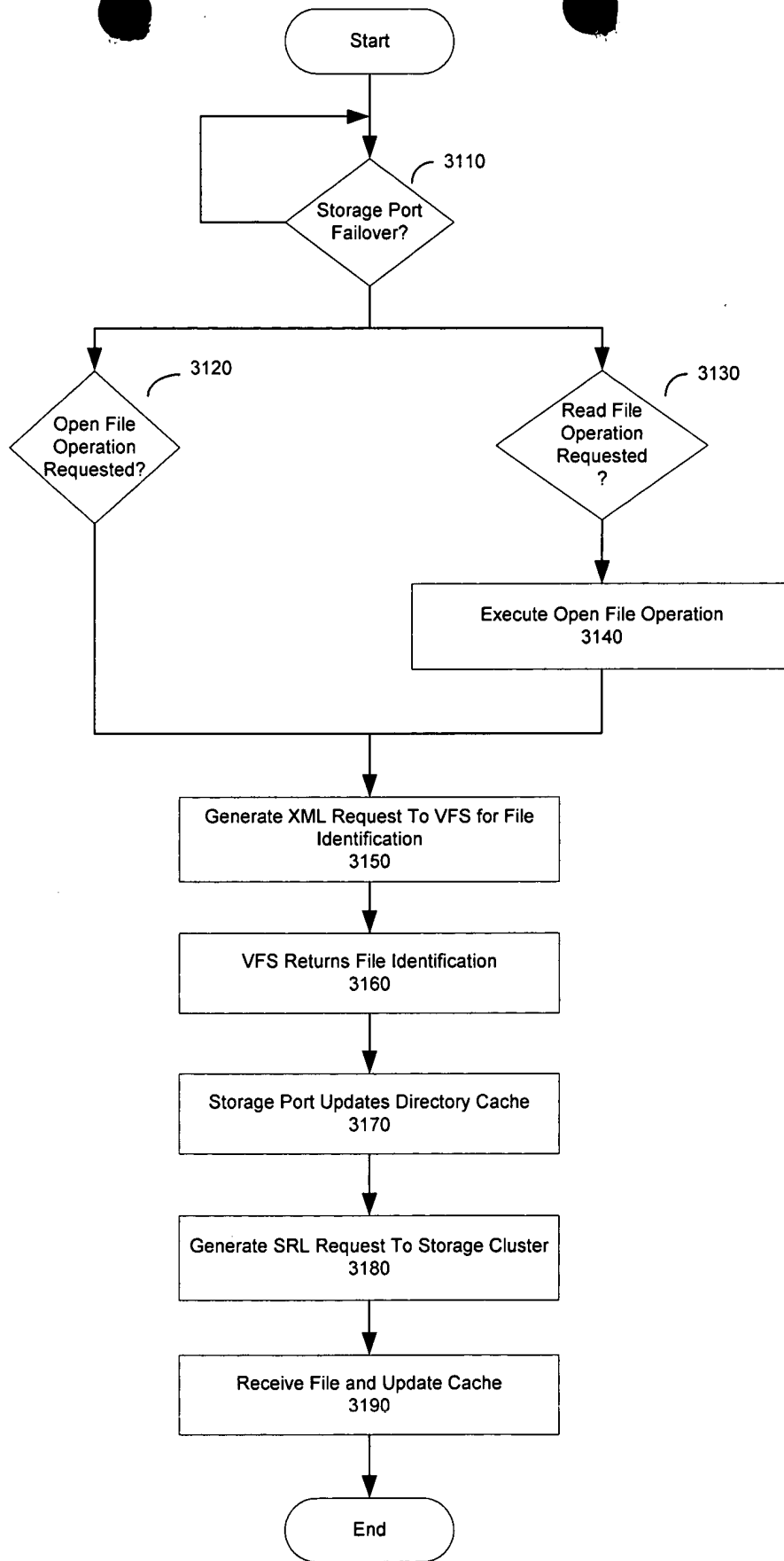


Figure 30

66456960

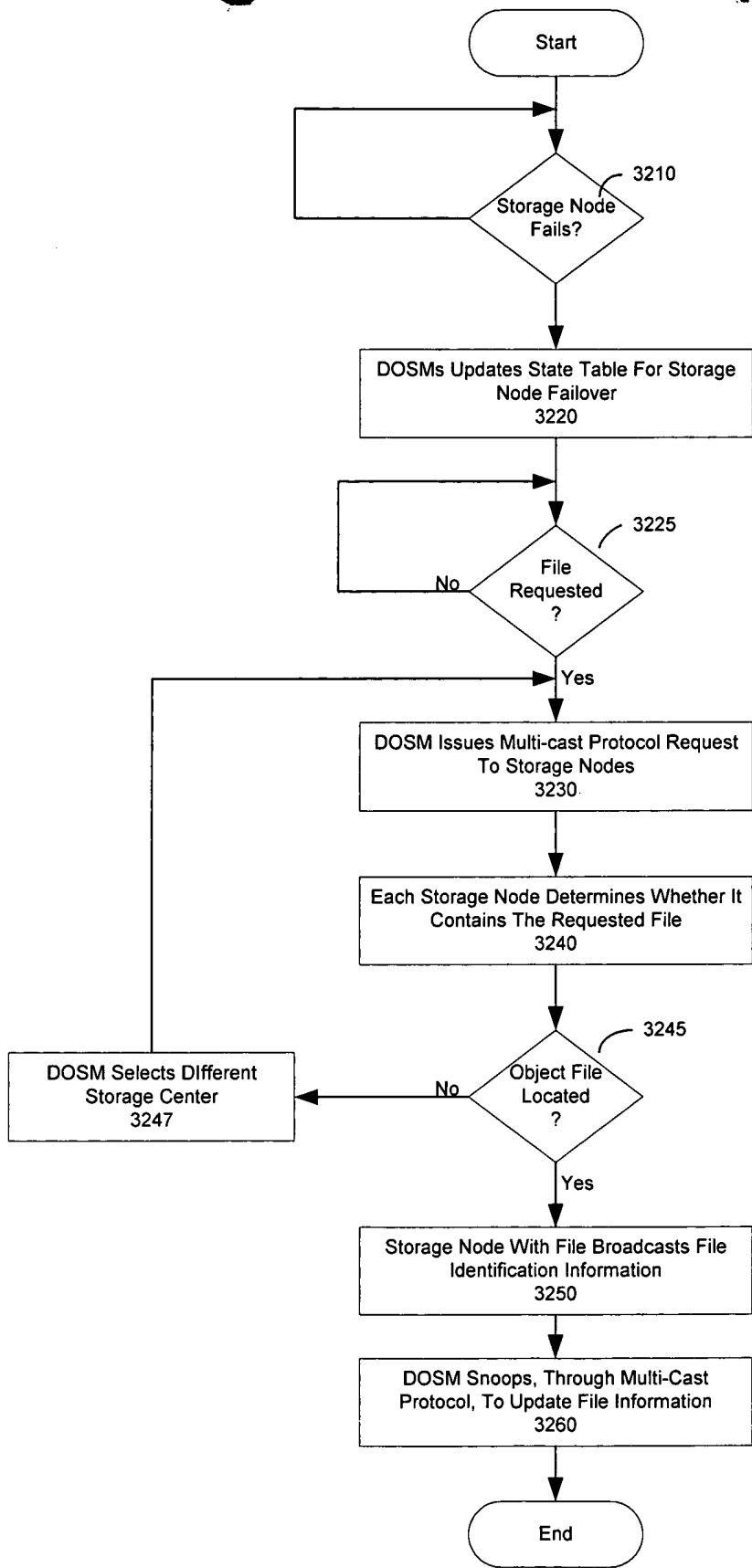


Figure 31